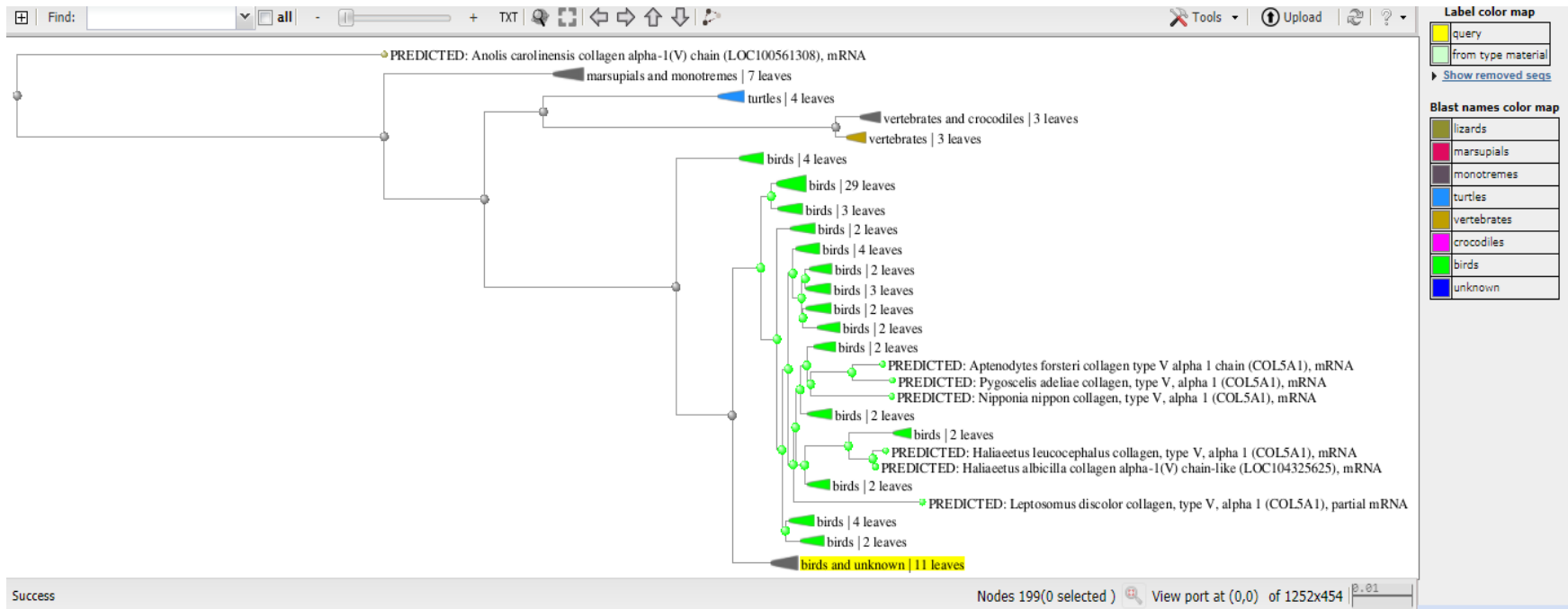


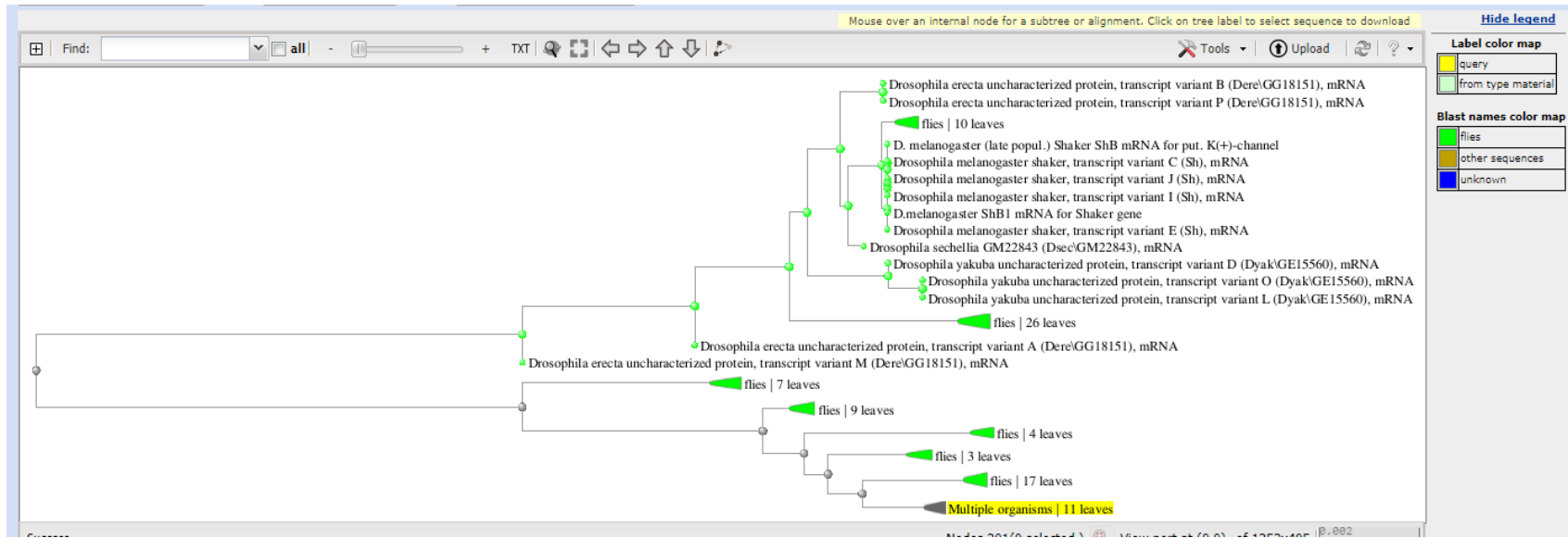
Gene 1:

[Gallus gallus collagen type V alpha 1 chain \(COL5A1\), mRNA](#) e value = 0, Query coverage = 100%



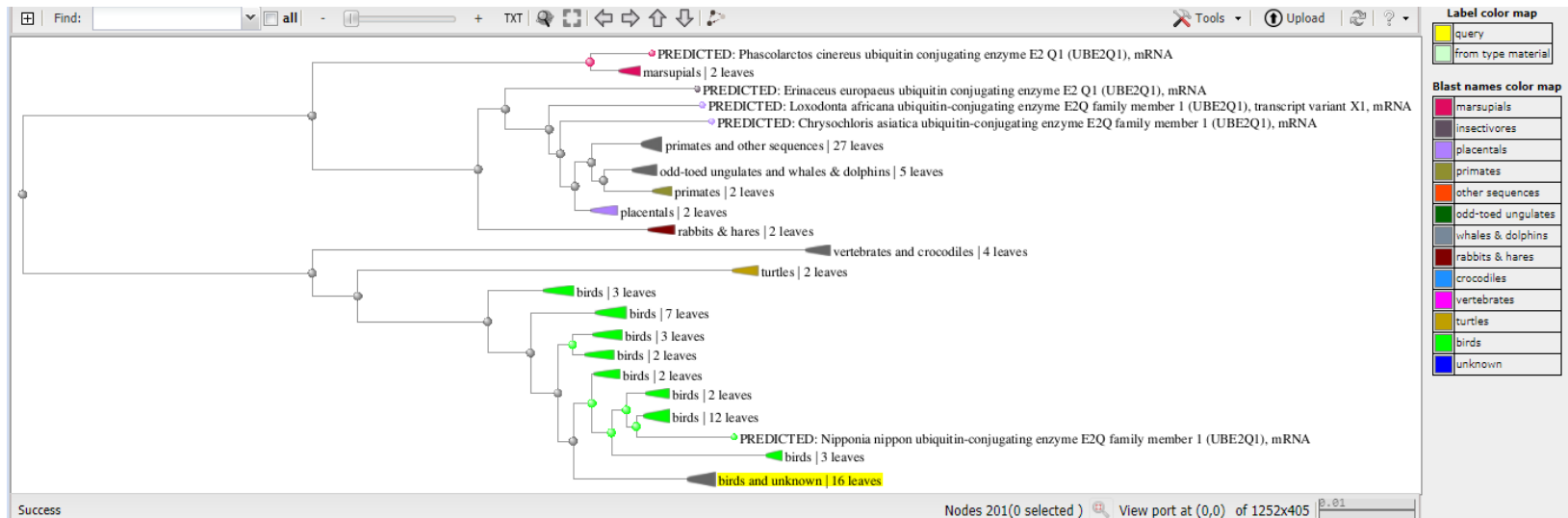
Gene 2:

[Drosophila melanogaster FI02063 full insert cDNA](#) e value = 0, Query coverage = 92%



Gene 3:

[PREDICTED: Taeniopygia guttata ubiquitin-conjugating enzyme E2Q family member 1 \(UBE2Q1\), partial mRNA](#) e value = 0 query coverage = 95%



Gene 4:

[Alligator sinensis mitochondrion, complete genome](#) e value = 0 Query coverage = 100%

