

REEP CompleteCare

What is CompleteCare?

CompleteCare reimburses you (the employee) and your dependents for eligible health care expenses and premium expenses incurred under alternate group health coverage.

CompleteCare Benefits

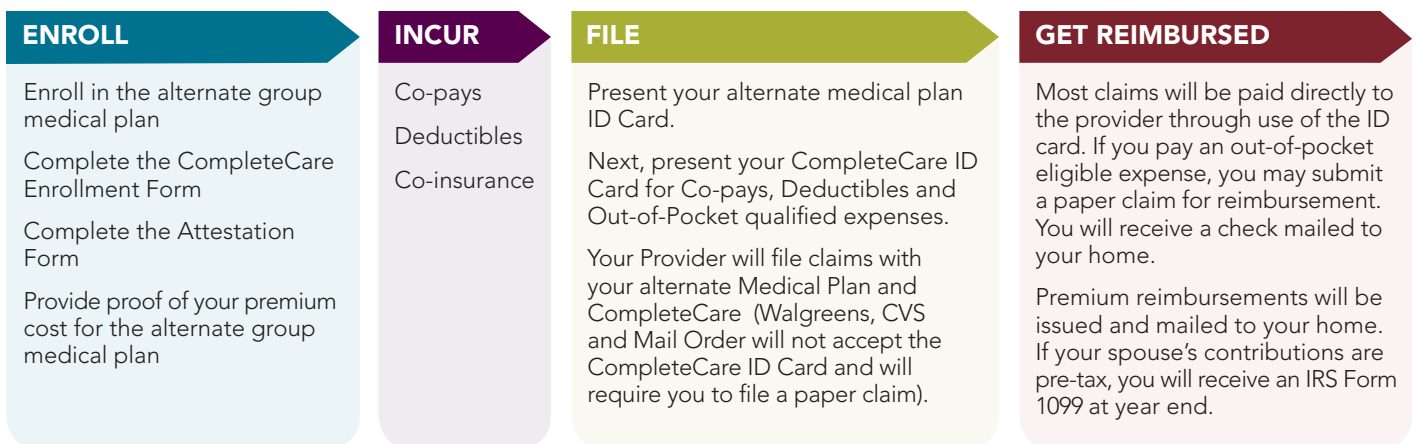
- Co-pays, deductibles and co-insurance reimbursed by CompleteCare up to \$7,350/single and \$14,700/family per year.
- No premium contribution deducted from your paycheck.
- You will be reimbursed for the premium contribution paid for the alternate coverage if it exceeds the premium contribution that you would have paid to remain on the REEP medical plan up to a monthly maximum of \$100/single, \$200/2-party and \$300/family.

If the cost of alternate coverage is less than you would have paid for the REEP medical plan, the premium contribution reimbursement is \$0.

IRS Rules

- You may be enrolled in an HRA or FSA. You CANNOT be reimbursed from both CompleteCare and your HRA or FSA.
- You are NOT eligible for CompleteCare if your alternate coverage:
 - has an active contribution to a Health Savings Account (HSA);
 - is Medicare, Medicaid, Tricare (Retiree only) or an Individual Policy.
 - is a Limited Benefit Health Plan

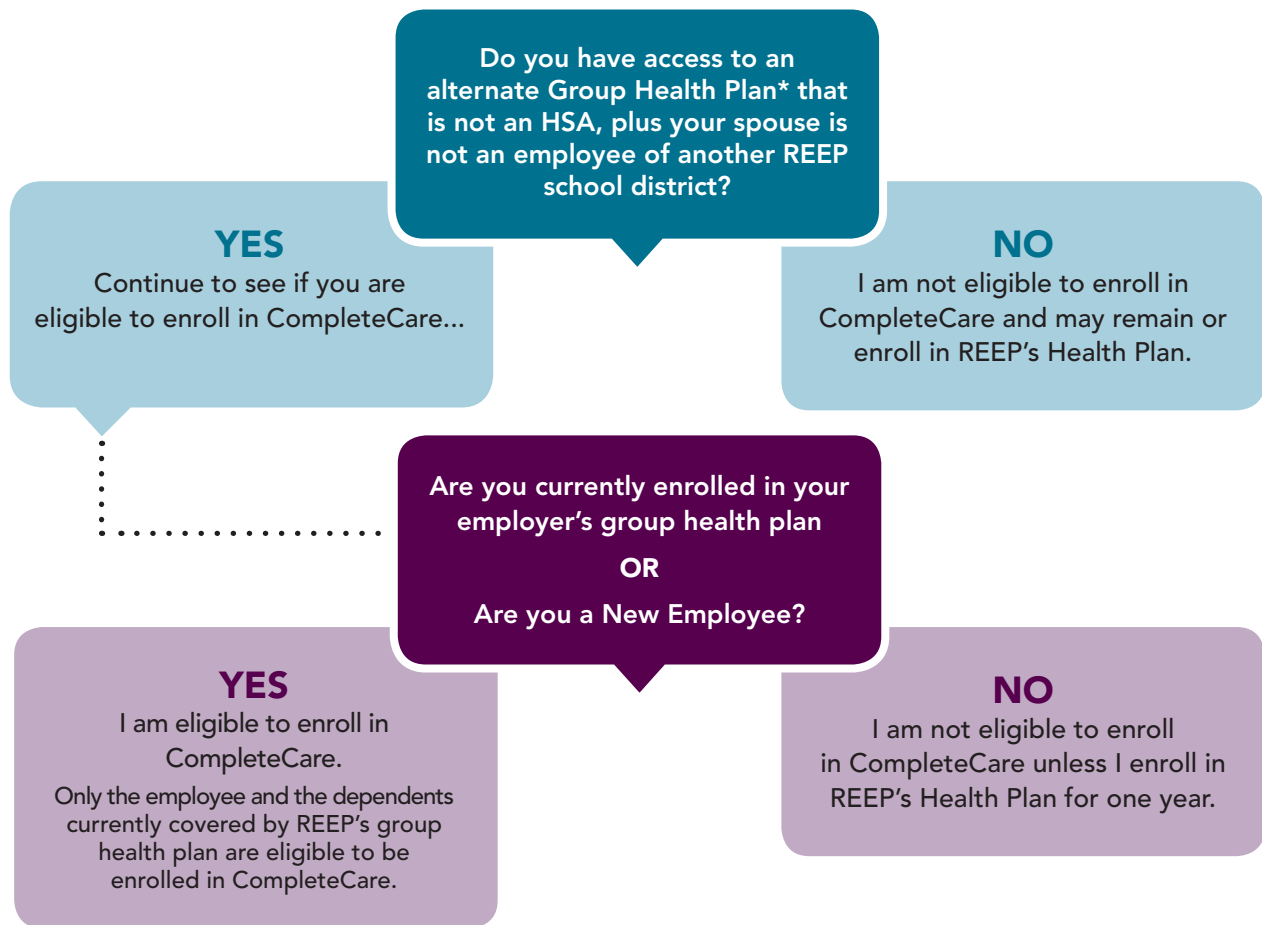
How Does CompleteCare Work?



License No. 0451271



Are you eligible for CompleteCare?



*If at any point an employee loses access to their alternate group health plan – a Qualifying Event – you will be able to enroll in REEP's group health plan



For more information, please contact your Keenan representative at 310.212.3344 or J&K Consultants at 877.872.4232.



License No. 0451271

